

# MISSION: IRON MAN!

Welcome to the Literacy Lab, here in the former school of world-famous author Ted Hughes.

Your mission, should you choose to accept it, is to rescue the Iron Man's missing body parts from the pesky seagulls that have flown off around the building. Find the seagulls, solve the puzzles, and piece together our metallic hero.

Once you have found a gull, tick it off on this sheet, then use the information boards to answer the questions and solve the puzzles.

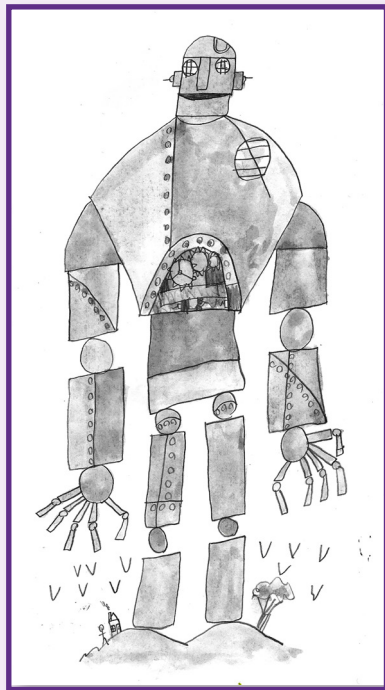


Illustration by Jack, Montagu Academy, Mexborough

After you have retrieved the Iron Man's missing body parts, piece him together on the last page. Finally, have a go at sketching the Iron Man in the centrefold of this booklet. Copy him from from the mural or an adult might be able to help you.

## Ted's School Days

Use the information board to fill in the Fact File below...



### TED HUGHES FACT FILE

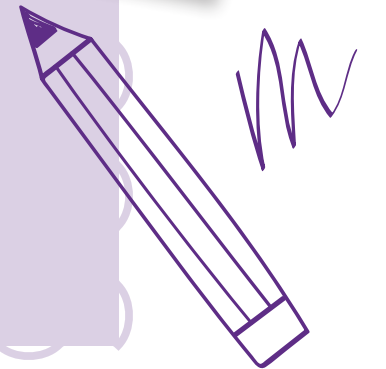
Born: \_\_\_\_\_

Grew up in: \_\_\_\_\_

Famous for: \_\_\_\_\_

Favourite book: \_\_\_\_\_

Died: \_\_\_\_\_



## Illustrating The Iron Man

The Iron Man has been illustrated by many artists. Which cover is your favourite? Find them on the board and shade in your favourite below...

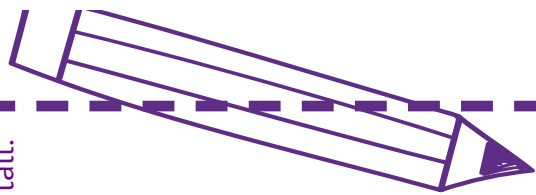
- 1
- 2
- 3
- 4
- 5
- 6

Which illustrator of The Iron Man painted the mural in this building?

C					O			D
---	--	--	--	--	---	--	--	---



Create your own picture of The Iron Man below. Turn the page so you can draw him nice and tall.





# Master storyteller

The Iron Man defends the Earth against a fearsome...



D

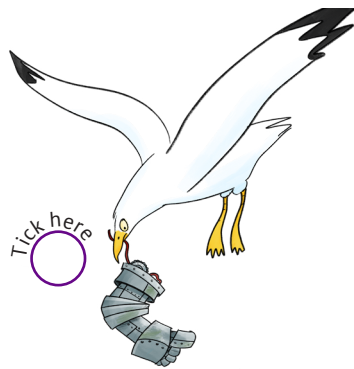


Name three things the Iron Man devours in the poem

1. \_\_\_\_\_
2. \_\_\_\_\_
3. \_\_\_\_\_

What colour are The Iron Man's eyes in the poem?  
Circle the correct answer...

- Yellow      Blue      White  
Green      Red



# The Iron Woman

In which year was The Iron Woman published?

1

9



The Iron Woman turns the local businessmen into river creatures. Can you find 5 river creatures in this wordsearch?

(Answers at the end of the page)

F	T	W	E	N
R	I	P	E	H
O	L	S	L	I
G	I	S	H	A
C	T	O	A	D

# Ted loves Nature



List three things Ted Hughes would do in the local countryside

1. \_\_\_\_\_
2. \_\_\_\_\_
3. \_\_\_\_\_

Ted Hughes wrote a lot of poems about British wildlife. Can you match his descriptions with the correct creatures? The first one is done for you...

dangerous missile

a masked burglar

earth gobbler

long-eared elf



worm



hare



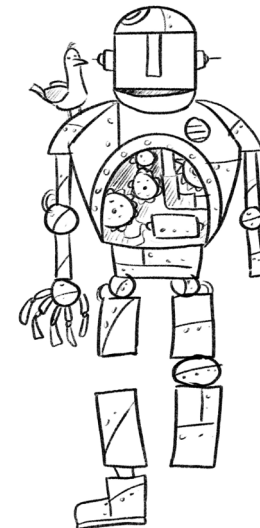
bee



badger

# MISSION ACCOMPLISHED!

Found all five seagulls? Fill in the missing body parts to complete the Iron Man...



Eye 1

Eye 2

Hand

Knee

Foot